



Plate IA. Tani: **Top:** Small Tani melon beads. D: 10 mm; L: 6.5 mm. **Bottom:** Large melon beads. D: 20-22 mm; L: 18-20 mm (all photos by author unless otherwise indicated).

Plate IC. Tani: Apa Tani *nyibo* (priest) chanting at an animal sacrifice, wearing a much valued antique necklace of conch beads, as well as a band of cowrie shells.



Plate IB. Tani: Apa Tani woman with bamboo nose plugs and facial tattoo examining antique heirloom beads. Apa Tani women only wear their heirloom beads at festivals.

Plate ID. Tani: **Top:** Much-worn Venetian black eye beads in a Tani heirloom necklace. **Bottom:** Wound “dogtooth” beads with melon-like lobes.



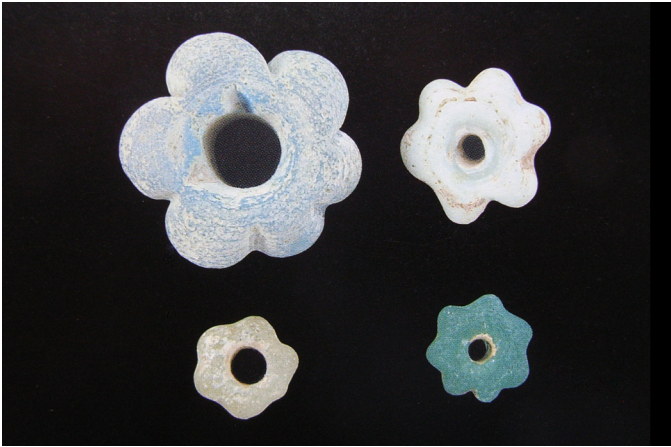


Plate IIA. *Tani*: Glass melon beads, Yuan dynasty (1271-1368), China (Kwan 2001:82). The bottom specimens are 14-27 mm in diameter and 11-19 mm in length (Kwan 2001:368).

Plate IIB. *Tani*: **Top**: Possible Yuan-dynasty lobed glass beads on the Kunming antiquities market, Yunnan, China. **Bottom**: *Tani* “moon” beads showing horseshoe-shaped marks on the surface.

Plate IIC. *Tani*: **Top**: More-recent (19th or early 20th century) wound blue glass beads valued by the Tanis. **Bottom**: Opaque blue beads worn by *chamm* dancers at the Tawang monastery in Arunachal Pradesh, India.

Plate IID. *Tani*: **Top**: *Chamm* dancer dressing, Torgya festival, Tawang monastery. **Bottom**: Blue glass beads worn bandolier-style by monks at the *chamm* dance.





Plate IIIA. Tani: Top: Akha heirloom beads, Chiang Mai, Northern Thailand. Lower beads: possibly late 19th or early 20th century; upper beads: probably much more recent (1990s?). **Bottom:** Blue wound beads in Kachin heirloom necklaces, Putao, northern Burma.

Plate IIIB. Tani: Top: Fake antique conch shell beads, Harmuti market, Assam. **Bottom:** Fake Tani melon beads before (bottom) and after (top) ageing.

Plate IIIC. Tani: Top: Bead sellers at Harmuti market, Assam. **Bottom:** New Venetian feather beads and Peking glass beads, Harmuti market.

Plate IIID. Tani: Jamuna Prasad Shah, son of Kailash Shah, with a customer at the Harmuti market.



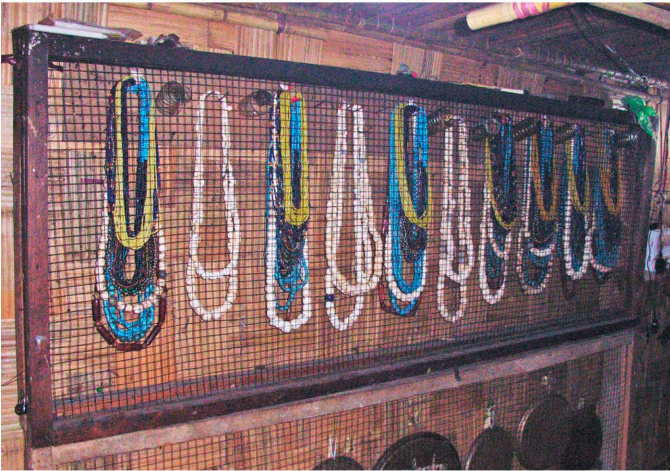


Plate IVA. Tani: **Top:** Clan wives with their heirloom beads during the *murung* festival, Apa Tani valley. **Bottom:** The clan women's heirloom necklaces after being secured. The metal trays displayed beneath them are also valued by the Tanis.



Plate IVB. Tani: A valuable assemblage of antique Tani heirloom beads.